

IDEA TO FINISHED PRODUCT



2026 PRODUCT GUIDE

Looking Ahead. Fast Forward.

Progress demands constant focus. Our enthusiasm for developing technological leaps is refueled every day with energy and curiosity. After all, this is not the time for incremental change, but for fresh thinking within new parameters — especially to achieve our goal of net zero by 2035.

As the market evolves toward "renewable", our customers are drawn to more sustainable designs, including products that can be recycled and repaired. We are expanding our offerings for product differentiation, anticipating customer needs, and their own response to new market requirements.

Collaboration remains king. We are sharing ideas with customers at an earlier stage of development — the design stage — so innovations can happen before specifications are determined. This reduces time-to-market, expands the choice of materials, and sets the stage for more efficient manufacturing.

At GT, progress is people. Making our spaces accessible for people with physical and emotional disabilities, or other special needs, creates a more dynamic, inclusive working environment. And bigger ideas are sparked with a more diverse group of skilled professionals.

Yet, as we look forward to creating positive impact, we never lose sight of our signature traits: innovation, reliability, and ultimately, competitiveness.

At every level we at GT are taking our mantra to heart — Go Beyond.

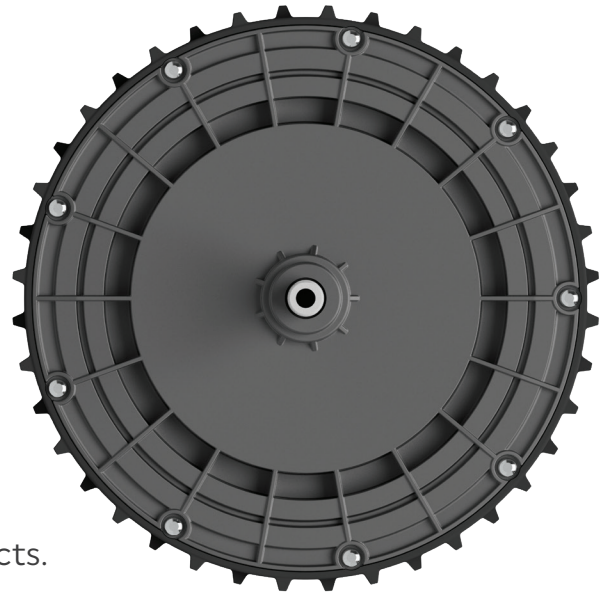
Want to Go Beyond? Challenge Us!

LITTLE POWERHOUSE

TRANSMISSION MEETS MOTOR MEETS ECONOMY OF MOTION

New from GT, the e-wheel technology eclipses traditional transaxle-style systems, offering a streamlined approach to electrifying new products.

The unique hub design is compact and lightweight, with an optimal power-to-size ratio that has the capacity to redefine the development of new products. It features a unique gear reduction design that packs a smaller motor into a compact self-contained, sealed casing. This results in the ability to develop products that are lighter and last longer while delivering the same power. It opens the opportunity to electrify leisure carts, lawn carts, wheelbarrows, golf club carts, and other utility products.



A WORLDWIDE PRESENCE FOR GREATER EFFICIENCY

Building on our success with gas-powered lawn mower and snowblower transmissions, we are committed to continuing innovation with battery-powered solutions worldwide.



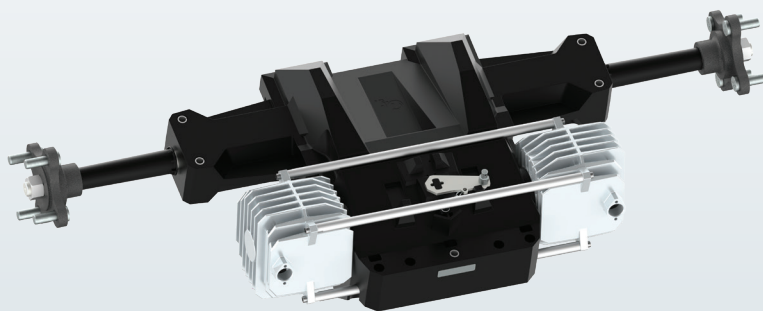
Electric Transmissions

GT remains the industry leader in electric transmissions for lawn care. Our 30-year track record plus our elite R&D enable you to bring environmentally-friendly and cost-efficient solutions to market faster than ever. Explore our advanced power-driven, variable-speed transmissions that make belts and pulleys obsolete.

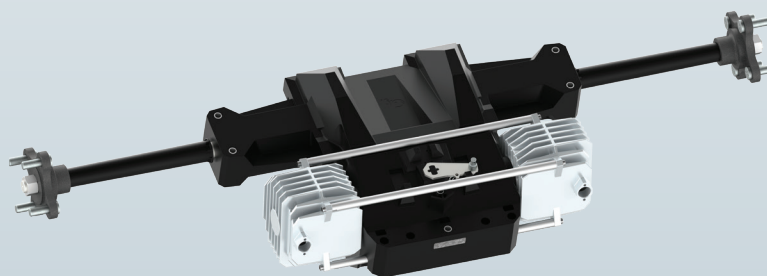
Transmission Characteristics		
Max Power	Max Weight	Design Life
ZTR Transmissions		
EZ 2000		
2 x 1000 W	1000 lbs	300 Hrs
EZ 2200		
2 x 1200 W	1200 lbs	300 Hrs
Walk Behind Transmissions		
ME 310/312		
350 W	78 lbs	200 Hrs
ME 410/412		
425 W	100 lbs	200 Hrs
ME 510/512		
500 W	122lbs	200 Hrs
ME 520/522		
500 W	122 lbs	400 Hrs
ME 612		
600 W	145 lbs	200 Hrs
ME 622		
600 W	145 lbs	500 Hrs
ME 722		
700 W	165 lbs	500 Hrs
Robot Transmissions		
RM 300		
17 W	33 lbs	8000 Hrs

ZTR

EZ 2000



EZ 2200



Walk Behind

ME 310-522

ME 612-622

ME 722

Robot

RM 300



Controllers & Motors

We offer powerful motors optimized for a variety of footprints, and chassis options. Pair our tailor-made controllers with any motor for handheld and wheeled OPE solutions for landscaping, sawing, and snow removal.

Controller Characteristics

Power Range

Control Units

PMDC Traction

300 W — 600 W

BLDC Traction

500 W — 4000 W

BLDC PTO

700 W — 6000 W

Controller Display

LCD Display

2.7" — Monochrome — LED Backlight

Wheeled Motor Characteristics

Max Torque	Max Power	Voltage
Ride-On Blade Motor		
BL140 x 42		
3145 mNm	1100 W	44 V
Snow Thrower Motor		
GM3000		
8100 mNm	3000 W	50 V
Walk Behind Blade Motors		
PM100 x 60		
1085 mNm	390 W	32 V
BL100 x 33		
1150 mNm	475 W	28 V
Robot Blade Motor		
BL63 x 28		
200 mNm	80 W	27 V

Ride-On Blade Motor

BL140 x 42

3145 mNm 1100 W 44 V

Snow Thrower Motor

GM3000

8100 mNm 3000 W 50 V

Walk Behind Blade Motors

PM100 x 60

1085 mNm 390 W 32 V

BL100 x 33

1150 mNm 475 W 28 V

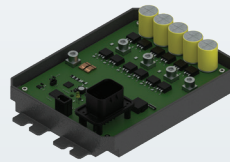
Robot Blade Motor

BL63 x 28

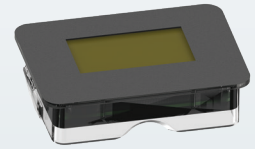
200 mNm 80 W 27 V

Controllers

Control Unit

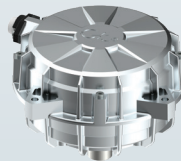


Controller Display



Wheeled OPE

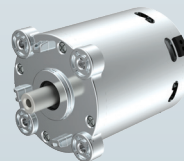
Ride-On Blade Motor



Snow Thrower Motor



Walk Behind Blade Motor

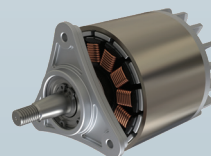


Robot Blade Motor



Handheld OPE

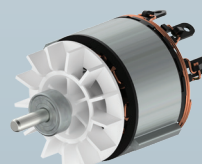
Leaf Blower



String Trimmer



Hedge Trimmer



Chainsaw



Visit us at generaltransmissions.com for complete technical specifications and expanded product listings.

Motors for Handheld

Full electric power, now quieter than ever. GT's line of power solutions for electric handheld outdoor power equipment is setting a new standard. With enhanced testing in our on-site "quiet room", and robot testing site, rest assured that your handheld equipment is more user and neighbor-friendly than ever. No compromises.

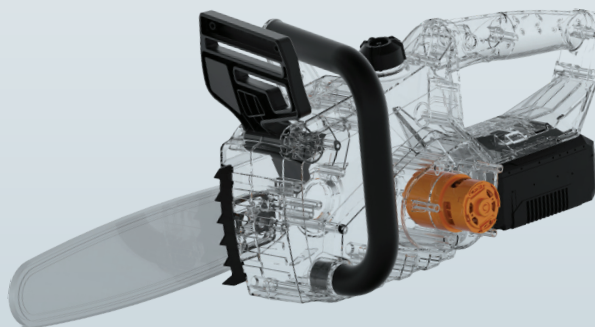
Handheld Motor Characteristics		
Max Torque	Max Power	Voltage
Leaf Blower Motors		
BL48 x 23		
195 mNm	400 W	25 V
PM42 x 30		
105 mNm	200 W	18 V
PM48 x 17		
145 mNm	120 W	18 V
String Trimmer Motors		
PM42 x 30		
90 mNm	80 W	18 V
PM42 x 31		
105 mNm	100 W	18 V
PM48 x 29		
210 mNm	340 W	40 V
Hedge Trimmer Motor		
BL48 x 18		
38 mNm	35 W	10.8 V
Chainsaw Motors		
PM42 x 32		
130 mNm	270 W	18 V
PM48 x 30		
215 mNm	470 W	18 V

Outer Rotor Motors			
OR	Max torque (mNm)	Power (W)	Voltage (V)
OR28	425	242	8
OR40	4050	2400	48
OR62	6390	1940	56
OR80	16920	4450	56
OR100	36000	3390	44

Leaf Blower



Chainsaw



String Trimmer



Gas Transmissions

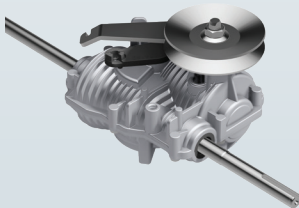
The world leader in gas walk-behind mower transmissions. From economical single-speed models to smooth, variable-speed drives, our transmissions are the most practical, cost-efficient, and dependable products available. With over 40 million walk-behind transmissions sold, quality and performance are assured.

Full Selection of Commercial and Residential Solutions.

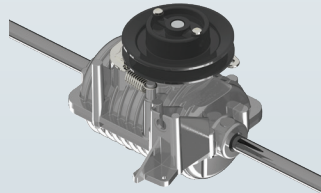
The models shown are just 7 of 16 models available. They have different clutch technologies, depending on the required torque, expected lifetime, and needed price point to meet your exact specifications.

Commercial Transmissions				
Model	Clutch Type	Max Weight	Front/Rear Wheel Drive	Ratios
MG 510/512	Cone	165 lbs	Rear	5.7:1, 7.4:1, 10.1:1
MV 500/502	Cone	165 lbs	Rear	4.4:1
MV 702	Cone	260 lbs	Rear	9:1

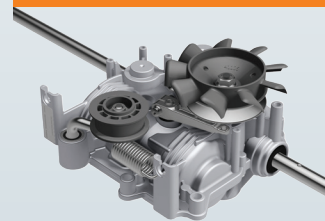
MG 510/512



MV 500/502

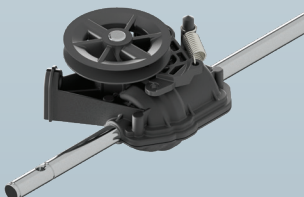


MV 702

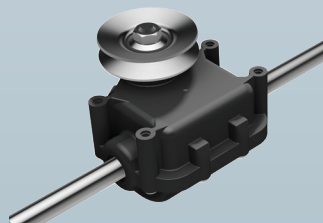


Residential Transmissions				
Model	Clutch Type	Max Weight	Front/Rear Wheel Drive	Ratios
MD 200	Dog	80 lbs	Front	6:1
MD 260	Dog	80 lbs	Front/Rear	6:1, 9:1
MA 300/302	Belt Tens. / Auto	100 lbs	Front/Rear	4.5:1, 5.25:1 6:1, 7:1, 9:1
MA 502	Belt Tens. / Auto	120 lbs	Rear	4.5:1, 5.25:1, 7:1, 10.5:1
MC 300	Cone	100 lbs	Rear	6:1, 9:1
MC 600	Cone	145 lbs	Rear	4.5:1, 5.25:1, 6:1, 7:1, 9:1, 10.5:1
ML 200	Belt Tensioning	80 lbs	Front	6:1

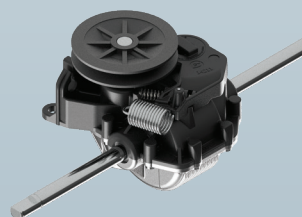
NEW MD 260



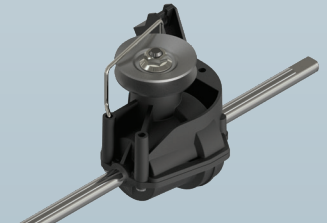
MA 302



MC 600



NEW ML 200





Go Beyond. generaltransmissions.com

Europe (+33) 2 51 66 96 30 | United States (956) 541-3443 | Asia (+86) 512 69367280